

# Tardis Environmental UK Limited

Head Office: Fryers Road, Leamore, Bloxwich, WS2 7LZ

Telephone: **01922 402410**

Fax: **01922 402085**

Email: **info@tardishire.co.uk**



# TARDIS

Nationwide Service: **0800 731 0589**

**ENVIRONMENTAL UK**

## Tardis on-demand water pump

Pumps are designed to respond to a drop in pressure, such an occurrence happens when taps are turned on or toilets flush etc.

### Important points to note when setting up.

- All pumps are powered from a 240v supply
- All water fittings into and out of the pump are 25mm unless otherwise stated.
- On demand pumps need to be protected in cold and freezing weather
- There must be a good head of water into the pump from the bowser

### Feeding the pump

- Pumps are designed to pump clean water
- Following installation ensure pump is bled and all air released from

### Pump head (see below)

- Pumps are not externally water proof

Proud Sponsors of **WaterAid**



[www.tardishire.co.uk](http://www.tardishire.co.uk)

Terms & Conditions available to view at [www.tardishire.co.uk/term.html](http://www.tardishire.co.uk/term.html)

**Vacuum Tankers • Portable Toilet Hire • Jetting/CCTV Drainage Services • Bulk Water Delivery • Water Bowser Hire  
Waste Tanks • Road Sweepers • Water Pump Hire • Septic Tank Emptying • Cesspool Emptying • Welfare Servicing**

**DEPOTS LOCATED NATIONWIDE**

Company Reg No. 2581818 V.A.T Reg No. 125 4846 11



## Bleeding process

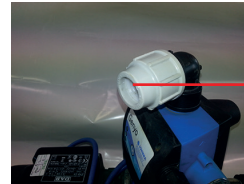
When on demand pumps are first set up or the bowser that is supplying water runs out of water, the pump will often require bleeding.

**This is a simple process-**

1. Ensure there is a good flow of water from the bowser to the pump (in feed bottom out feed top)



**This is Bottom Feed In**



**This Is Top Feed Out**

Disconnect 240v power supply



Remove small black screws x 2 situated on the top of the silver pump head and below the water in feed.

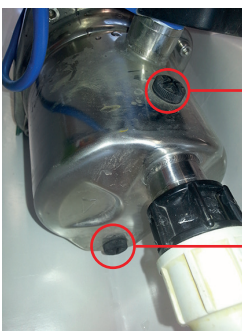


**Remove This Screw**

**Remove 2nd Screw**

Allow water to flow through the pump head until all air and bubbles are removed

Once clear flowing water is recognised replace small black screws bottom screw 1st then top screw last.



**Replace Top Screw Last**

**Replace Bottom Screw First**

Proud Sponsors of **WaterAid**



[www.tardishire.co.uk](http://www.tardishire.co.uk)

Terms & Conditions available to view at [www.tardishire.co.uk/term.html](http://www.tardishire.co.uk/term.html)

**Vacuum Tankers • Portable Toilet Hire • Jetting/CCTV Drainage Services • Bulk Water Delivery • Water Bowser Hire • Waste Tanks • Road Sweepers • Water Pump Hire • Septic Tank Emptying • Cesspool Emptying • Welfare Servicing**

**DEPOTS LOCATED NATIONWIDE**

Company Reg No. 2581818 V.A.T Reg No. 125 4846 11

# Tardis Environmental UK Limited

Head Office: Fryers Road, Leamore, Bloxwich, WS2 7LZ

Telephone: **01922 402410**

Fax: **01922 402085**

Email: **info@tardishire.co.uk**



# TARDIS

Nationwide Service: **0800 731 0589**

**ENVIRONMENTAL UK**

## Bleeding process continued....

Reconnect power



Press reset button for 15 seconds



**Reset Button Is Located Here. (Control models may vary)**

Pump should activate then stop

Open tap or valve to check pump is working (pump will only activate with tap or valve open)

**If pump activates and stops continually check system for leaks this includes-**

- Urinals with flush
- Toilet systems
- Pipe joints etc.
- Pump fittings
- Pipe reducers to cabin.
- Shower systems

Proud Sponsors of **WaterAid**



**www.tardishire.co.uk**

Terms & Conditions available to view at [www.tardishire.co.uk/term.html](http://www.tardishire.co.uk/term.html)

**Vacuum Tankers • Portable Toilet Hire • Jetting/CCTV Drainage Services • Bulk Water Delivery • Water Bowser Hire • Waste Tanks • Road Sweepers • Water Pump Hire • Septic Tank Emptying • Cesspool Emptying • Welfare Servicing**

**DEPOTS LOCATED NATIONWIDE**

Company Reg No. 2581818 V.A.T Reg No. 125 4846 11